

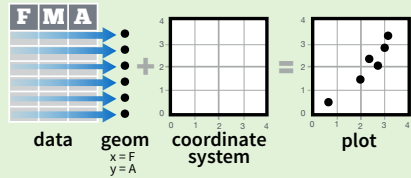
# Data Visualization with ggplot2

## Cheat Sheet

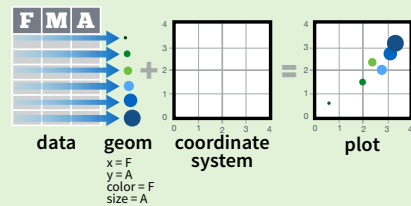


### Basics

ggplot2 is based on the **grammar of graphics**, the idea that you can build every graph from the same few components: a **data** set, a set of **geoms**—visual marks that represent data points, and a **coordinate system**.



To display data values, map variables in the data set to aesthetic properties of the geom like **size**, **color**, and **x** and **y** locations.



Build a graph with **qplot()** or **ggplot()**

**aesthetic mappings**   **data**   **geom**

**qplot(x = cty, y = hwy, color = cyl, data = mpg, geom = "point")**

Creates a complete plot with given data, geom, and mappings. Supplies many useful defaults.

**ggplot(data = mpg, aes(x = cty, y = hwy))**

Begins a plot that you finish by adding layers to. No defaults, but provides more control than qplot().

**data**

```
ggplot(mpg, aes(hwy, cty)) +
  geom_point(aes(color = cyl)) +
  geom_smooth(method = "lm") +
  coord_cartesian() +
  scale_color_gradient() +
  theme_bw()
```

add layers, elements with +

layer = geom + default stat + layer specific mappings

additional elements

Add a new layer to a plot with a **geom\_\*()** or **stat\_\*()** function. Each provides a set of aesthetic mappings, and a default stat and position adjustment.

**last\_plot()**

Returns the last plot

**ggsave("plot.png", width = 5, height = 5)**

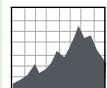
Saves last plot as 5' x 5' file named "plot.png" in working directory. Matches file type to file extension.

## Geoms - Use a geom to represent data points, use the geom's aesthetic properties to represent variables. Each function returns a layer.

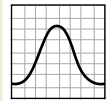
### One Variable

#### Continuous

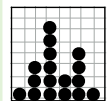
**a <- ggplot(mpg, aes(hwy))**



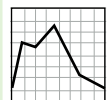
**a + geom\_area(stat = "bin")**  
x, y, alpha, color, fill, linetype, size  
b + geom\_area(aes(y = ..density..), stat = "bin")



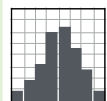
**a + geom\_density(kernel = "gaussian")**  
x, y, alpha, color, fill, linetype, size, weight  
b + geom\_density(aes(y = ..county..))



**a + geom\_dotplot()**  
x, y, alpha, color, fill



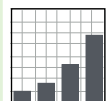
**a + geom\_freqpoly()**  
x, y, alpha, color, linetype, size  
b + geom\_freqpoly(aes(y = ..density..))



**a + geom\_histogram(binwidth = 5)**  
x, y, alpha, color, fill, linetype, size, weight  
b + geom\_histogram(aes(y = ..density..))

#### Discrete

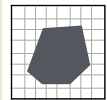
**b <- ggplot(mpg, aes(fl))**



**b + geom\_bar()**  
x, alpha, color, fill, linetype, size, weight

### Graphical Primitives

**c <- ggplot(map, aes(long, lat))**

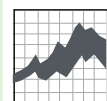


**c + geom\_polygon(aes(group = group))**  
x, y, alpha, color, fill, linetype, size

**d <- ggplot(economics, aes(date, unemploy))**

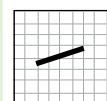


**d + geom\_path(lineend="butt", linejoin="round", linemitre=1)**  
x, y, alpha, color, linetype, size

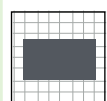


**d + geom\_ribbon(aes(ymin=unemploy - 900, ymax=unemploy + 900))**  
x, ymax, ymin, alpha, color, fill, linetype, size

**e <- ggplot(seals, aes(x = long, y = lat))**



**e + geom\_segment(aes(xend = long + delta\_long, yend = lat + delta\_lat))**  
x, xend, y, yend, alpha, color, linetype, size



**e + geom\_rect(aes(xmin = long, ymin = lat, xmax = long + delta\_long, ymax = lat + delta\_lat))**  
xmax, xmin, ymax, ymin, alpha, color, fill, linetype, size

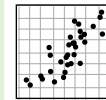
### Two Variables

#### Continuous X, Continuous Y

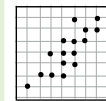
**f <- ggplot(mpg, aes(cty, hwy))**



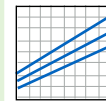
**f + geom\_blank()**



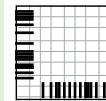
**f + geom\_jitter()**  
x, y, alpha, color, fill, shape, size



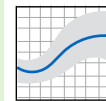
**f + geom\_point()**  
x, y, alpha, color, fill, shape, size



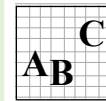
**f + geom\_quantile()**  
x, y, alpha, color, linetype, size, weight



**f + geom\_rug(sides = "bl")**  
alpha, color, linetype, size



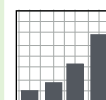
**f + geom\_smooth(model = lm)**  
x, y, alpha, color, fill, linetype, size, weight



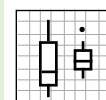
**f + geom\_text(aes(label = cty))**  
x, y, label, alpha, angle, color, family, fontface, hjust, lineheight, size, vjust

#### Discrete X, Continuous Y

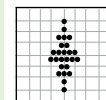
**g <- ggplot(mpg, aes(class, hwy))**



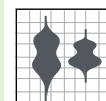
**g + geom\_bar(stat = "identity")**  
x, y, alpha, color, fill, linetype, size, weight



**g + geom\_boxplot()**  
lower, middle, upper, x, ymax, ymin, alpha, color, fill, linetype, shape, size, weight



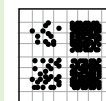
**g + geom\_dotplot(binaxis = "y", stackdir = "center")**  
x, y, alpha, color, fill



**g + geom\_violin(scale = "area")**  
x, y, alpha, color, fill, linetype, size, weight

#### Discrete X, Discrete Y

**h <- ggplot(diamonds, aes(cut, color))**



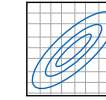
**h + geom\_jitter()**  
x, y, alpha, color, fill, shape, size

#### Continuous Bivariate Distribution

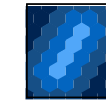
**i <- ggplot(movies, aes(year, rating))**



**i + geom\_bin2d(binwidth = c(5, 0.5))**  
xmax, xmin, ymax, ymin, alpha, color, fill, linetype, size, weight



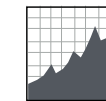
**i + geom\_density2d()**  
x, y, alpha, colour, linetype, size



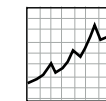
**i + geom\_hex()**  
x, y, alpha, colour, fill size

#### Continuous Function

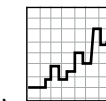
**j <- ggplot(economics, aes(date, unemploy))**



**j + geom\_area()**  
x, y, alpha, color, fill, linetype, size



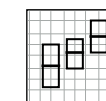
**j + geom\_line()**  
x, y, alpha, color, linetype, size



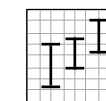
**j + geom\_step(direction = "hv")**  
x, y, alpha, color, linetype, size

#### Visualizing error

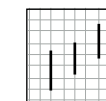
**df <- data.frame(grp = c("A", "B"), fit = 4:5, se = 1:2)**  
**k <- ggplot(df, aes(grp, fit, ymin = fit-se, ymax = fit+se))**



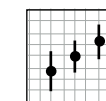
**k + geom\_crossbar(fatten = 2)**  
x, y, ymax, ymin, alpha, color, fill, linetype, size



**k + geom\_errorbar()**  
x, ymax, ymin, alpha, color, linetype, size, width (also **geom\_errorbarh()**)



**k + geom\_linerange()**  
x, ymin, ymax, alpha, color, linetype, size



**k + geom\_pointrange()**  
x, y, ymin, ymax, alpha, color, fill, linetype, shape, size

#### Maps

**data <- data.frame(murder = USArrests\$Murder, state = tolower(rownames(USArrests)))**  
**map <- map\_data("state")**  
**l <- ggplot(data, aes(fill = murder))**



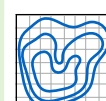
**l + geom\_map(aes(map\_id = state), map = map) + expand\_limits(x = map\$long, y = map\$lat)**  
map\_id, alpha, color, fill, linetype, size

### Three Variables

**sealsSz <- with(seals, sqrt(delta\_long^2 + delta\_lat^2))**  
**m <- ggplot(seals, aes(long, lat))**



**m + geom\_raster(aes(fill = z), hjust=0.5, vjust=0.5, interpolate=FALSE)**  
x, y, alpha, fill



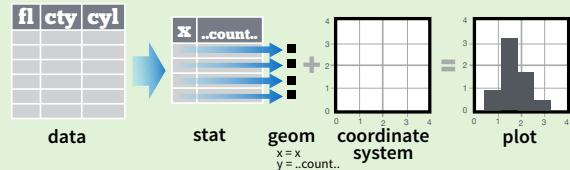
**m + geom\_contour(aes(z = z))**  
x, y, z, alpha, colour, linetype, size, weight



**m + geom\_tile(aes(fill = z))**  
x, y, alpha, color, fill, linetype, size

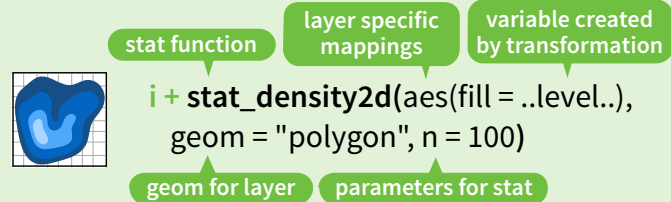
## Stats - An alternative way to build a layer

Some plots visualize a **transformation** of the original data set. Use a **stat** to choose a common transformation to visualize, e.g. `a + geom_bar(stat = "bin")`



Each stat creates additional variables to map aesthetics to. These variables use a common **..name..** syntax.

stat functions and geom functions both combine a stat with a geom to make a layer, i.e. `stat_bin(geom="bar")` does the same as `geom_bar(stat="bin")`



**1D distributions**

- `a + stat_bin(binwidth = 1, origin = 10)`  
x, y | ..count.., ..ncount.., ..density.., ..ndensity..
- `a + stat_bin2d(binwidth = 1, binaxis = "x")`  
x, y, | ..count.., ..ncount..
- `a + stat_density(adjust = 1, kernel = "gaussian")`  
x, y, | ..count.., ..density.., ..scaled..

**2D distributions**

- `f + stat_bin2d(bins = 30, drop = TRUE)`  
x, y, fill | ..count.., ..density..
- `f + stat_binhex(bins = 30)`  
x, y, fill | ..count.., ..density..
- `f + stat_density2d(contour = TRUE, n = 100)`  
x, y, color, size | ..level..

**3 Variables**

- `m + stat_contour(aes(z = z))`  
x, y, z, order | ..level..
- `m + stat_spoke(aes(radius = z, angle = z))`  
angle, radius, x, xend, y, yend | ..x.., ..xend.., ..y.., ..yend..
- `m + stat_summary_hex(aes(z = z), bins = 30, fun = mean)`  
x, y, z, fill | ..value..
- `m + stat_summary2d(aes(z = z), bins = 30, fun = mean)`  
x, y, z, fill | ..value..

**Comparisons**

- `g + stat_boxplot(coef = 1.5)`  
x, y | ..lower.., ..middle.., ..upper.., ..outliers..
- `g + stat_ydensity(adjust = 1, kernel = "gaussian", scale = "area")`  
x, y | ..density.., ..scaled.., ..count.., ..n.., ..violinwidth.., ..width..

**Functions**

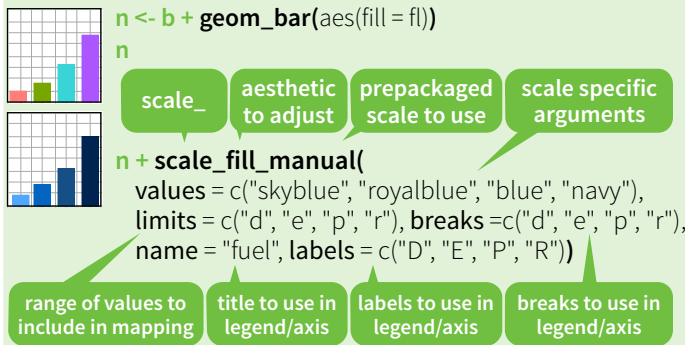
- `f + stat_ecdf(n = 40)`  
x, y | ..x.., ..y..
- `f + stat_quantile(quantiles = c(0.25, 0.5, 0.75), formula = y ~ log(x), method = "rq")`  
x, y | ..quantile.., ..x.., ..y..
- `f + stat_smooth(method = "auto", formula = y ~ x, se = TRUE, n = 80, fullrange = FALSE, level = 0.95)`  
x, y | ..se.., ..x.., ..y.., ..ymin.., ..ymax..

**General Purpose**

- `ggplot() + stat_function(aes(x = -3:3), fun = dnorm, n = 101, args = list(sd=0.5))`  
x | ..y..
- `f + stat_identity()`
- `ggplot() + stat_qq(aes(sample=1:100), distribution = qt, dparams = list(df=5))`  
sample, x, y | ..x.., ..y..
- `f + stat_sum()`  
x, y, size | ..size..
- `f + stat_summary(fun.data = "mean_cl_boot")`
- `f + stat_unique()`

## Scales

**Scales** control how a plot maps data values to the visual values of an aesthetic. To change the mapping, add a custom scale.



**General Purpose scales**  
Use with any aesthetic:  
alpha, color, fill, linetype, shape, size

- `scale_*_continuous()` - map cont' values to visual values
- `scale_*_discrete()` - map discrete values to visual values
- `scale_*_identity()` - use data values as visual values
- `scale_*_manual(values = c())` - map discrete values to manually chosen visual values

**X and Y location scales**  
Use with x or y aesthetics (x shown here)

- `scale_x_date(labels = date_format("%m/%d"), breaks = date_breaks("2 weeks"))` - treat x values as dates. See ?strptime for label formats.
- `scale_x_datetime()` - treat x values as date times. Use same arguments as `scale_x_date()`.
- `scale_x_log10()` - Plot x on log10 scale
- `scale_x_reverse()` - Reverse direction of x axis
- `scale_x_sqrt()` - Plot x on square root scale

**Color and fill scales**

- Discrete**
  - `n <- b + geom_bar(aes(fill = fl))`
  - `n + scale_fill_brewer(palette = "Blues")`  
For palette choices: `library(RColorBrewer)`, `display.brewer.all()`
  - `n + scale_fill_grey(start = 0.2, end = 0.8, na.value = "red")`
- Continuous**
  - `o <- a + geom_dotplot(aes(fill = ..x..))`
  - `o + scale_fill_gradient(low = "red", high = "yellow")`
  - `o + scale_fill_gradient2(low = "red", high = "blue", mid = "white", midpoint = 25)`
  - `o + scale_fill_gradientn(colours = terrain.colors(6))`  
Also: `rainbow()`, `heat.colors()`, `topo.colors()`, `cm.colors()`, `RColorBrewer::brewer.pal()`

**Shape scales**

- `p <- f + geom_point(aes(shape = fl))`
- `p + scale_shape(solid = FALSE)`
- `p + scale_shape_manual(values = c(3:7))`  
Shape values shown in chart on right

**Manual shape values**

0	6	12	18	24
1	7	13	19	25
2	8	14	20	*
3	9	15	21	
4	10	16	22	o
5	11	17	23	o

**Size scales**

- `q <- f + geom_point(aes(size = cyl))`
- `q + scale_size_area(max = 6)`  
Value mapped to area of circle (not radius)

## Coordinate Systems

`r <- b + geom_bar()`

- `r + coord_cartesian(xlim = c(0, 5))`  
xlim, ylim  
The default cartesian coordinate system
- `r + coord_fixed(ratio = 1/2)`  
ratio, xlim, ylim  
Cartesian coordinates with fixed aspect ratio between x and y units
- `r + coord_flip()`  
xlim, ylim  
Flipped Cartesian coordinates
- `r + coord_polar(theta = "x", direction=1)`  
theta, start, direction  
Polar coordinates
- `r + coord_trans(ytrans = "sqrt")`  
xtrans, ytrans, limx, limy  
Transformed cartesian coordinates. Set extras and strains to the name of a window function.
- `z + coord_map(projection = "ortho", orientation=c(41, -74, 0))`  
projection, orientation, xlim, ylim  
Map projections from the mapproj package (mercator (default), azequalarea, lagrange, etc.)

## Position Adjustments

Position adjustments determine how to arrange geoms that would otherwise occupy the same space.

`s <- ggplot(mpg, aes(fl, fill = drv))`

- `s + geom_bar(position = "dodge")`  
Arrange elements side by side
- `s + geom_bar(position = "fill")`  
Stack elements on top of one another, normalize height
- `s + geom_bar(position = "stack")`  
Stack elements on top of one another
- `f + geom_point(position = "jitter")`  
Add random noise to X and Y position of each element to avoid overplotting

Each position adjustment can be recast as a function with manual **width** and **height** arguments

`s + geom_bar(position = position_dodge(width = 1))`

## Themes

- `r + theme_bw()`  
White background with grid lines
- `r + theme_classic()`  
White background no gridlines
- `r + theme_grey()`  
Grey background (default theme)
- `r + theme_minimal()`  
Minimal theme

`ggthemes` - Package with additional ggplot2 themes

## Faceting

Facets divide a plot into subplots based on the values of one or more discrete variables.

`t <- ggplot(mpg, aes(cty, hwy)) + geom_point()`

- `t + facet_grid(. ~ fl)`  
facet into columns based on fl
- `t + facet_grid(year ~ .)`  
facet into rows based on year
- `t + facet_grid(year ~ fl)`  
facet into both rows and columns
- `t + facet_wrap(~ fl)`  
wrap facets into a rectangular layout

Set **scales** to let axis limits vary across facets

- `t + facet_grid(y ~ x, scales = "free")`  
x and y axis limits adjust to individual facets
  - "free\_x" - x axis limits adjust
  - "free\_y" - y axis limits adjust

Set **labeller** to adjust facet labels

- `t + facet_grid(. ~ fl, labeller = label_both)`

fl: c	fl: d	fl: e	fl: p	fl: r
-------	-------	-------	-------	-------
- `t + facet_grid(. ~ fl, labeller = label_bquote(alpha ^ .(x)))`

$\alpha^c$	$\alpha^d$	$\alpha^e$	$\alpha^p$	$\alpha^r$
------------	------------	------------	------------	------------
- `t + facet_grid(. ~ fl, labeller = label_parsed)`

c	d	e	p	r
---	---	---	---	---

## Labels

- `t + ggtitle("New Plot Title")`  
Add a main title above the plot
- `t + xlab("New X label")`  
Change the label on the X axis
- `t + ylab("New Y label")`  
Change the label on the Y axis
- `t + labs(title = "New title", x = "New x", y = "New y")`  
All of the above

Use scale functions to update legend labels

## Legends

- `t + theme(legend.position = "bottom")`  
Place legend at "bottom", "top", "left", or "right"
- `t + guides(color = "none")`  
Set legend type for each aesthetic: colorbar, legend, or none (no legend)
- `t + scale_fill_discrete(name = "Title", labels = c("A", "B", "C"))`  
Set legend title and labels with a scale function.

## Zooming

- Without clipping (preferred)**  
`t + coord_cartesian(xlim = c(0, 100), ylim = c(10, 20))`
- With clipping (removes unseen data points)**  
`t + xlim(0, 100) + ylim(10, 20)`  
`t + scale_x_continuous(limits = c(0, 100)) + scale_y_continuous(limits = c(0, 100))`